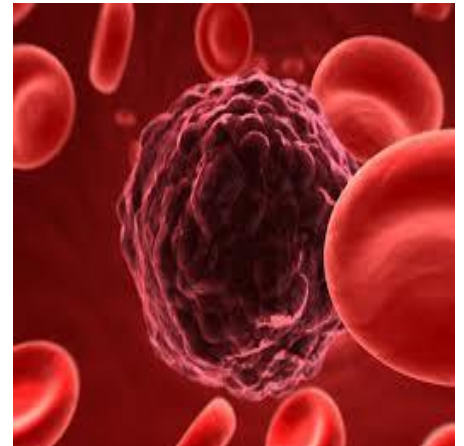
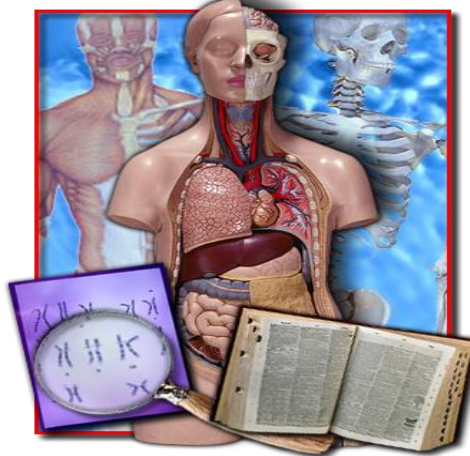


Pathophysiology



Prerequisite: Biology AND Chemistry & any intermediate level HS course

Course: 8125CT

Credits: 1

Length: 18 weeks

Placement: 11-12

Course Description

Students will study disease processes, and how the human systems are affected. Emphasis is placed on prevention and treatment of diseases. Students will differentiate normal and abnormal physiology.

Note: Course can be used as an additional science credit for graduation.

Student Activities

This course requires students to develop microscope mastery, lab safety protocol, and demonstrate proper techniques to perform autopsies on animal specimens. Students will research mechanisms of disease, to include etiology, signs and symptoms, diagnosis, treatment, and prognosis of system specific disorders.

Organizations/After School/Competitions

Mansfield Medical Club

